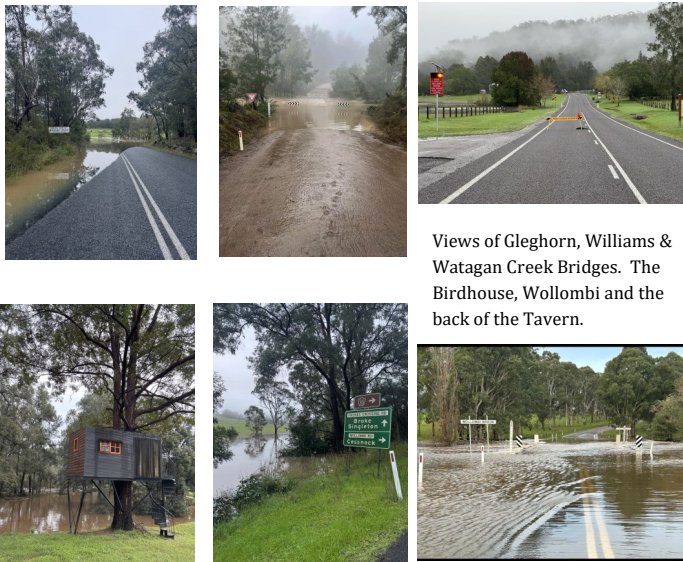


Our Own News

Another notch on the Tavern wall as Wollombi Valley experiences yet another deluge and flooding with NSW Government declaring a Natural Disaster. The devastation up and down the coast is heartbreaking and we have had our fair share along the way too. Our community is resilient and strong and comes together to help each other in these tough times.

Local and support services are assisting those affected.

To report an emergency related to a flood in the Cessnock area, call NSW SES on 132 500. For general inquiries or non-emergency flood-related issues, you can contact Cessnock City Council at (02) 4993 4100.



Views of Gleghorn, Williams & Watagan Creek Bridges. The Birdhouse, Wollombi and the back of the Tavern.

The Wollombi Valley Community Association

Wishes to Thank the many volunteers, students and community members who contributed to another memorable Anzac Day Service last month.

A special acknowledgement to Antoinette Maurer and family for the Lords Prayer, and also to Jim Wilson for hosting the service.

Public Address by Simon Geraghty

Vocals/Audio: Tim Usher & Students

Storytelling history: Students from Laguna Public School supported by teacher Simone Smith.

Local schools Book Giving by Cessnock Council

A huge Thank you to The Wollombi Tavern and their hard working team, for their generous support to the annual Service and welcoming the community and visitors to our villages by providing hot breakfast, refreshments and a nip of Rum to stave off the cold. The day continued with a traditional two-up and entertainment.

THANK YOU ALL !



Join Us for a Free Community Event on Rural Mental Health & Wellbeing!

A day dedicated to strengthening mental health, resilience, and community connections.



The Greater Wollombi Valley Community Resilience Network (GWVCRN) invites you to a **free** community event on:

Saturday, 14th June, from 9 AM to 3 PM (includes morning tea & lunch).

Venue: Wollombi Tennis Club

Morning Workshops

9am: Psychological Preparedness (1 hour)
Discover why mental preparedness is just as crucial as physical readiness in times of disaster. Explore stress responses, resilience-building techniques, and resources for recovery.

10:30am: Wellbeing & Mental Health (2 hours)
Dive into the impact of stress on the body, the importance of self-care, and the **PERMA** model for wellbeing. Develop your own self-care plan and take practical steps toward a healthier mindset.

12:30pm: Lunch

Join the afternoon Community Connector Workshop

1pm: What is a Community Connector & how can you be involved? (2 hours)

Are you interested in playing a vital role in supporting your neighbourhoods within the existing CRN network or just learning more about it? This session provides information, guidance, and support to build stronger local connections.

Attend **one or all** sessions—it's completely flexible!

Don't miss this opportunity to invest in your mental health and strengthen your community.

Please register now and be part of a day that fosters resilience, wellbeing, and meaningful connections.

Email: info@wollombiresilience.org.au to register.

Be Connected!

For further information on the GWVCRN please visit our website: www.greaterwollombiresilience.org.au

or facebook page: [greaterwollombivalleycommunity](https://www.facebook.com/greaterwollombivalleycommunity)

Cover photo: courtesy of [@wollombivalley](https://www.instagram.com/wollombivalley)

With thanks to the FRRR for providing funding for this event.





Thank you to the Wollombi Valley Community

A huge thank you to everyone who made the Wollombi June Market a fantastic day!

From our hardworking volunteers to the dedicated stallholders, the wonderful visitors, and our incredible locals and community groups—YOU made it special. It was a perfect family-friendly event in historic Wollombi Village. A special thanks to everyone who supported the Wollombi RFS—we truly appreciate your generosity and commitment to our local heroes. ❤️

Another great long weekend in Wollombi Valley. The fireworks at the Tavern lit up the sky, and the markets at the Sale Yards brought even more vibrancy to our beautiful community. We can't wait to welcome you back for the Long Weekend Market in October!

📍 www.wollombimarketdays.com.au

UPCOMING EVENTS

See P6 for a full list of Art exhibitions and classes at The Fireshed Gallery currently showing and upcoming.

SUNDAY 8th June -Family Afternoon of Fun & Fireworks @ Wollombi Tavern

MONDAY 9th June **Wollombi June Markets**
8-2pm Cattle Yards at Wollombi
All proceeds go to the RFS

SUNDAY 15th June—Share Whats Spare Seed Workshop with Sam Tucker, Dairy Arm, Laguna

FRIDAY 20th June—Roadside Gallery Exhibition 'What the World Needs NOW! Fireshed Gallery, Wollombi

FRIDAY 20th June—Ngarralingayil Barker—**Open Day** 10am—2851 Wollombi Rd, Wollombi. Everyone welcome.

SATURDAY 21st June—Winter Solstice Celebration Details: @ Wollombi Yoga

FRI 15-SUN 17th August—Laguna Public School **Art Show**. Entries now open. Wollombi Valley Arts Council

A friendly visitor to our village on Anzac Day, was 'Bushy' from Rushworth VIC. Bushy, as he likes to be known, grew up in the Terrigal region and visited Wollombi each year with his parents..and now still continues to make the annual pilgrimage.



Relaxing at The Tavern after the Service, he commented 'it was the best service I've ever attended and I've been to a lot!'

Thank you Bushy, see you next year!

INVITATION
A COLLABORATION

OLD FIRESHED GALLERY WOLLOMBI

WHAT THE WORLD NEEDS NOW!

WE INVITE YOU TO AN AVANT-GARDE EXHIBITION THAT DEFIES CONVENTION AND IGNITES CONVERSATION.

OPENING NIGHT PREVIEW: FRIDAY, 20TH JUNE FROM 4 PM
CLOSING CELEBRATION: SUNDAY, 6TH JULY FROM 4PM

WAKE UP DREAM EMPOWER COLLABORATE
QUESTION HARMONY THINK LEARN

Immensely grateful to the following businesses for their generosity in support of this exhibition.

WINMARK WINES STONEHURST NOVUS

Free Community Event

Share What's Spare,
Food and Conversation
Sharing Plants, Seeds & Stories

New Date:
Sunday, June 15
Postponed due to
weather!

This time at Dairy Arm, Laguna!

Sam Tucker will share with us tips about how to propagate seeds and plants for spring without digging into your savings, & how to improve your garden beds.

Whether or not you are a gardener, come and enjoy!
Bring a plate of food to share with friends, neighbours and something (if you like) to free cycle.
Registration essential for venue details, any updates.

GWVCRN FRRR Foundation for Rural Regional Renewal

For more information and registration
www.kawalang.com 0404896396 yum@kawalang.com

WHAT THE WORLD NEEDS NOW! A CREATIVE WAKE-UP CALL TO PROTECT OUR PLANET AND EMPOWER CHANGE

Wollombi, NSW — *What the World Needs NOW!* is not just an art exhibition—it's a vibrant, provocative space for reflection, action, and inspiration. Taking over the Old Fireshed Gallery in the Hunter Valley this June, the show brings together a bold group of artists challenging us to see the everyday choices that shape our world.

Through recycled materials, playful disruption, and a defiant spirit of non-conformity, this mixed-media exhibition urges us to rethink what we value and how we live. It asks: *What if the solution isn't out there, but right here—in our homes, our communities, our own hands?* A collaboration with a clear message: **we can all make a difference.**

From fashion made with purpose to sculptures that re-use discarded objects, from sonic art that stirs the senses to interactive spaces where visitors can contribute their own visions, this show celebrates creativity as a force for change.

Themes of balance, peace, love, and sustainability weave a common thread throughout the exhibition. It invites everyone to consider:

- How do our daily choices impact the planet?
- Can we grow more consciously, live more gently, and collaborate more boldly?
- What if standing out from the crowd is exactly what's needed to shift the collective energy?

What the World Needs NOW! is a joyful rebellion against apathy—a call to wake up, speak up, and make positive choices that protect our planet and empower one another.

Exhibition Events Old Fireshed Gallery, Wollombi, Hunter Valley, NSW

Opening Night Preview: Friday, 20th June, from 4pm

Closing Celebration: Sunday, 6th July, from 4pm

Featuring Artists:

* Stephanie Vella * Kerryn Raco * Rode Vella * Campbell Murray * Simon Mariner + Special Opening Night Collaborators

This exhibition is a growing conversation. Visitors are encouraged to scrawl their own ideas, hopes, and solutions—becoming part of a collective vision for a better future.

When we collaborate, we create a shift. One choice at a time. One voice at a time.

Let's shape the world we want to live in—together.

Wollombi Valley Pony Club

Exciting times at the Wollombi Pony Club Ground!

In the words of Banjo Paterson, there has been "movement at the station and the word has got around," that we are finally getting a new shed to replace the one that was destroyed in the 2022 floods.

The new shed will be similar in colour and materials to the existing mist green, corrugated iron toilet facility and can be hosed out following times of flooding.

It will have a central elevated storage area and wide verandahs for horse and rider to shelter under. Watch this space!

Simone Smith
Wollombi Valley Pony Club.



Greater Wollombi Valley Community Resilience Network

Network Events in June & Updates

Greater Wollombi Valley Community Resilience Network (GWVCRN) invites you to a free community event on Saturday, 14th June, from 9 AM to 3 PM at the Wollombi Tennis Club (includes morning tea & lunch).

Morning Rural Mental Health & Well-being Workshops

Join Us for a Free Community Event on Rural Mental Health & Wellbeing!

9am: Psychological Preparedness (1 hour)
Discover why mental preparedness is just as crucial as physical readiness in times of disaster. Explore stress responses, resilience-building techniques, and resources for recovery.

10:30am: Wellbeing & Mental Health (2 hours)
Dive into the impact of stress on the body, the importance of self-care, and the PERMA model for wellbeing. Develop your own self-care plan and take practical steps toward a healthier mindset.

Afternoon Community Connector Workshop

Are you interested in playing a vital role in supporting your neighbourhoods within the existing CRN network or just learning more about it?

1pm: What is a Community Connector & how can you be involved? (2 hours)

This session provides information, guidance, and support to build stronger local connections.

Attend one or all sessions—it's completely flexible! Don't miss this opportunity to invest in your mental health and strengthen your community.

Please register now and be part of a day that fosters resilience, well-being, and meaningful connections.

Email: info@wollombiresilience.org.au to register for these workshops.

For further information on the GWVCRN please visit our website: www.greaterwollombiresilience.org.au or facebook page: [greaterwollombivalleycommunity](https://www.facebook.com/greaterwollombivalleycommunity)

With thanks to the Foundation for Rural Regional Renewal (FRRR) for providing funding for this event.

HORSE FOOD IN LAGUNA

88 Murrays Run Road, Laguna

Ph: 0408 495 623

E: aptrak@hotkey.net.au

Aptrak Stud stocks **Horse feed**, including:



Lucerne chaff, Oaten chaff, 50/50 chaff, Hay, Gumnuts, Easi Sport, Easi Response, Easi Fibre, Biomare, Copra, Rice Bran, Beet & much more!

Chicken feeds, Sheep, Cattle & Alpaca pellets

As well as we order in: Meals for Mutts, Meals for Meows, Ivory Coat, Supercoat, Advance, Optimum, Fancy feast, Chicken, Bird, Fish & Rabbit food.

Some stocks of pet toys, grooming products, horse rugs & accessories.



Aptrak home grown horses: bred, raised and trained at Laguna!



"By Appointment"

Be connected!

email: gtrwollombivalleyresilience@gmail.com
facebook: Greater Wollombi Valley Community Resilience Network





WOLLOMBI VALLEY ARTS COUNCIL INC ARTS NEWS

What's on at the Wollombi Cultural Centre

May – June 2025

The Wollombi Valley Arts Council encourages and fosters all kinds of artistic and cultural expression within the Wollombi Valley in order to support and promote artists and our community. Please visit our website www.wollombi.org

Our current exhibition...

'AFTER THE FLOOD'

An exhibition of paintings & sculptures by
STEPHEN COBURN

Open weekends 10am - 4pm 10 - 25 May 2025

**OLD FIRESHED GALLERY
WOLLOMBI CULTURAL CENTRE**

Our next exhibition...

'FIBRE ARTISTS PLUS WOOD'

Weaving, Eco-dyeing, Wearables & Woodturning
by

LYN ABBOTT, KEN HALL & BRUCE ABBOTT

Open 10am – 4pm, Friday – Sunday 30 May – 15 June

You are invited to join the artists for morning tea
from 10am Saturday 31st May

**OLD FIRESHED GALLERY
WOLLOMBI CULTURAL CENTRE**

Exhibition & Sale

Fibre Artists Plus Wood

Weaving, Eco Dyeing, Wearables & Woodturning.

Old Fished Gallery, Wollombi

10am-4pm on each of the following days:
 Fri, Sat, Sun - May 30 to June 1
 Fri, Sat, Sun, Mon - June 6 to June 9
 Fri, Sat, Sun - June 13 to June 15

Please join us for refreshments from 10am Saturday 31st May, 2025.

Lyn Abbott.
Weaving, Eco Dyeing, Wearable Art.
Instagram: lynabbott11

Ken Hall.
Weaving, Wearable Art.
Instagram: balcolyn

Bruce Abbott.
Woodturning.

For further information:
Please contact Lyn
0419 408140
lynabbott11@gmail.com

LIFE DRAWING in the OLD FIRESHED GALLERY

1pm – 4pm Wednesday May 28th and June 18th
Ph.02 49988686 Mandy Davies

WVAC EMERGING ARTIST AWARDS 2025

WVAC proudly invite entries in the 15th
Emerging Artist Awards

4th - 19th October 2025. We will be posting
details of new categories and increased prizes
on our website very soon. Please visit
www.wollombi.org for details.



Wollombi Valley Arts Council Inc.

Email: artscouncil@wollombi.org

yengogallery@wollombi.org

Web: www.wollombi.org

F/B: <https://www.facebook.com/artscouncilwollombi>

[artscouncilwollombi](https://www.facebook.com/artscouncilwollombi)

<https://www.facebook.com/littleyengogallery>

[littleyengogallery](https://www.facebook.com/littleyengogallery)

Wollombi Pilates

Life is easier with Pilates.

Mat Class – Wed 9.30am
Mat Class – Fri 10.30am
in the Wollombi Community Hall

For more information contact Susan
0403 270 365 or leithsu@bigpond.com



CESSNOCK CITY COUNCIL Wollombi Village Pedestrian Update

Cessnock City Council is moving ahead with upgrades to improve pedestrian safety and accessibility in Wollombi Village, with works set to begin in June 2025 and finish by January 2026.

The Wollombi High Pedestrian Activity Area and Shared Path to Cunneen’s Bridge projects will include a new shared zone around the intersection with reduced traffic speeds, widened and extended footpaths finished in decomposed granite, regraded parking, improved drainage, additional seating to enhance village amenity, and informal crossings to provide better village connectivity and visibility for both pedestrians and road users. New threshold treatments at the three approaches to the intersection will signal the High Pedestrian Activity Area and help calm traffic.

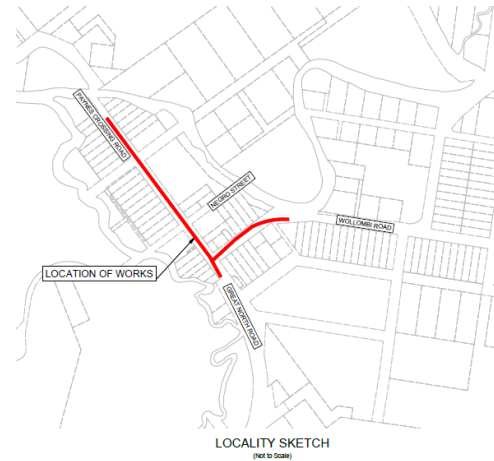
The key philosophy of the works is to improve and make Wollombi Village safer for local residents and visitors, while preserving and complimenting the historic features and character of the iconic destination.

Council is acutely aware of the significance of the project location, being within the Wollombi Village Heritage Conservation Area, and all upgrades have been carefully designed in line with existing heritage guidelines, legislation, policies, and strategies to respect and conserve Wollombi’s heritage, using natural quarried materials and avoiding impacts to nearby heritage-listed sites. A heritage induction will also be provided to all on-site personnel undertaking construction works so obligations for protecting heritage under the Heritage Act 1977 are understood.

Apart from temporary amenity impacts during the project construction, there will be no impacts upon heritage items adjacent to or in the vicinity of the project area. Council will

ensure minimal disruption during works and accommodate local events wherever possible.

The project’s design incorporates feedback from the community, ensuring that it reflects the needs and priorities of Wollombi’s residents and business operators. Additionally, consideration has been given to future-proofing the infrastructure, ensuring the village can continue to thrive while maintaining its unique charm.



Herald Spires Carpentry & Construction

Carpentry & Construction, Kitchen & Bathrooms, Repairs & Maintenance



Licence # 357776C

dan@hsc.net.au

Dan Shepherd 0419 955 595 Laguna

Asbestos contamination at Fernances Crossing: an update

Many readers will be aware that over two years ago, fill was dumped on a private property at Fernances Crossing which was subsequently found by the NSW Environmental Protection Authority (EPA) to contain asbestos-containing materials.

The EPA ultimately identified the company responsible for dumping the contaminated fill and they were fined. A court order was issued which required the fill to be removed by 31 January this year but that deadline was flouted.

Wollombi Valley Community Association has pursued this matter over its duration and one member has managed to gain traction through communicating directly with the EPA. A copy of the most recent response has been reproduced below.

Member
Wollombi Valley Community Association

By email attachment.

Dear Member,

Thank you for your correspondence of 23 April 2025 regarding asbestos contamination at Fernances Crossing, NSW.

The NSW Environment Protection Authority (EPA) is committed to the safe removal and disposal of asbestos-containing materials (ACM). We are taking all necessary action to address this situation effectively and lawfully. We understand your concerns about the timeliness of waste removal and assure you that we are actively working on this matter.

As you are aware, on 28 November 2024, the Parramatta Local Court issued a court order requiring specific clean-up actions for the Property. Due to alleged non-compliance with this order, the EPA is currently investigating the matter and is limited in the information we can provide. However, I can confirm that the EPA is further investigating the matter to determine an appropriate regulatory response, which may include a potential criminal prosecution. If the waste stockpiles remain, we will explore all available options to hold the offender(s) accountable.

The EPA continues to closely monitor the ACM at the Property and ensure that the current interim measures to minimise environmental risks remain effective. We understand your concerns about flood risks in the Wollombi Valley and emphasise that the timely resolution of this matter is important to both the EPA and the broader Wollombi Valley community.

As our investigation progresses, we will provide you with an update on this matter. Alternatively, you can contact Claire Miles, Manager, EPA on 02 9995 5167 or at info@epa.nsw.gov.au.

Yours sincerely

TONY CHAPPEL

Chief Executive Officer

ADVERTISE HERE

1/8 SIZE

BLACK AND WHITE

SINGLE ISSUE \$40-

PLUS INCLUSION ON OUR WEBSITE

**WOLLOMBI
EARTHWORKS
PTY LTD**

SCOTT HAMILTON

**Dozer Grader
BackHoe Tractor
Bogie Tipper Low Loader**

**Roads, Dams, House Sites, Clearing,
Mulching, Supply and Construct
Sandstone Retaining Walls and All
General Earthworks**

Landline: 49983308

Scott Mobile: 0405378398

Nickie Mobile: 0414722292

Email: wollombiearthworks@bigpond.com



Chamber Chatter June 2025

After four years of dedicated service, Stefan Cordiner (President) has stepped down from his role in the Wollombi Valley Chamber of Commerce,

Peter Elms (Secretary) has also stepped down after three years in his role to spend more time on family and business commitments.

As they embark on new chapters, we extend our deepest gratitude for their unwavering service and wish them both much happiness in their future endeavours. Their contributions have been invaluable, and they leave the Chamber ready for the next phase of leadership.

Stepping into these vital roles, **Deb Harrod** will serve as **President**, **Rob Fagan** as **Vice President**, and **Trish Reed** as **Secretary**. With their expertise, enthusiasm, and dedication to the Wollombi Valley community, the new leadership team is committed to building upon the Chamber's achievements and continuing its mission to support local businesses and foster collaboration.

The transition marks an exciting opportunity for fresh perspectives and renewed energy within the Chamber. With a deep appreciation for the foundation built by Stefan and Pete, Deb, Rob, and Trish look forward to strengthening community ties, advocating for growth, and ensuring the Chamber remains supportive for businesses in the Valley.

Upcoming Events in Wollombi Valley

The Wollombi Valley is buzzing with exciting events hosted by local businesses and community organizations. Here are some highlights:

- **Family Afternoon of Fun & Fireworks @ Wollombi Tavern** (June 8) – A lively event featuring entertainment and a grand fireworks display.
- **WVFB June Market @ Wollombi Cattle Yards** (June 9) – A vibrant market supporting local businesses and artisans.

- **What The World Needs Now – Avant-Garde Exhibition** (June 20) – A thought-provoking mixed-media art showcase.
- **Winter Solstice Celebration @ Wollombi Yoga** (June 21) – A sacred circle gathering to mark the solstice.
- **Laguna Public School Art Show** (August 15–17) – A celebration of creativity featuring works from local students and artists.

These events reflect the rich cultural and community spirit of Wollombi Valley, offering opportunities for connection, celebration, and support for local businesses.

What Would You Like from WVCC?

As a member organisation, your feedback guides our work. We want to hear from you—whether it's positive, constructive, or a fresh idea we haven't considered yet. What do you see as important for the Wollombi Valley Chamber of Commerce?

Your insights help us shape initiatives that best serve our community and local businesses. If you have thoughts to share or would like to meet and chat, please drop us a note at secwvcc@gmail.com

Your voice matters—let's build the future of the Chamber together!

Deb, Rob, Trish, Sharon, Annie & Graham

The advertisement features a woman, Llynda Nairn JP, speaking into a microphone at a podium. The background is a soft, abstract green and blue wash. Text on the left includes the Australian Federation of Civil Celebrants logo, her name, phone number (0425 279 939), email (llyndanairn@gmail.com), and website (YourCeremonyYourStory.com.au). A QR code is located in the bottom right corner. At the bottom, it states she is based in Millfield and serves as a Marriage Celebrant, MC, and provides various services.

Proud member of the
Australian Federation of
CIVIL CELEBRANTS
Llynda Nairn JP
📞 0425 279 939
✉️ llyndanairn@gmail.com
🌐 YourCeremonyYourStory.com.au

Based in Millfield, serving the Hunter and Beyond!
Marriage Celebrant : Commitment Ceremonies
MC : Milestone Family Events : Baby Namings : Funeral Services

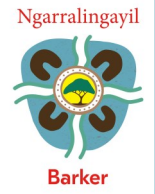


News from the Wollombi School Community Centre

A huge collective thank you to everyone who made the recent **Easter Monday Wollombi Market** such a great day out - all the loyal and new stall holders, everyone who came to participate in any way (mums, dads, singles, kids and dogs!), and thanks to all our wonderful members and volunteers who organised and worked on the Market on the day. We would also like to express our special appreciation to the Wollombi Volunteer Bushfire Brigade for the attendance of its truck and members, and the Laguna School group who ran a delicious barbeque. It was a golden day!

Just reminding everyone again, that if you would like to join in with the volunteer group working to continue to keep historic Wollombi School site in community hands, please become a member of the **Wollombi School Community Centre** (details on our website at wollombischool.com.au) and/or come along to one of our meetings. While we have explored various days and times to try to suit community attendance, we currently hold our committee meetings on the second Tuesday of each month at 10 am in the former Principals Cottage (corner of Wollombi Road and Crawford Streets, Wollombi). You would be most welcome.

The Wollombi School Community Centre Committee.



Hi everyone

We're excited to share our new flyer, advertising what we have to offer at Ngarralingayil Barker! Our school is a special place where Aboriginal culture, language, and learning come together. We offer a warm, supportive environment where children feel proud, confident, and connected to who they are. If you're looking for a school that values strong relationships, hands-on learning, and community spirit, we'd love for you to learn more about us!

Our Open Day is Friday 20th June – 10am



NGARRALINGAYIL BARKER

Our school is all about bringing education and culture together, giving our students the best opportunities while staying connected to their heritage.

What we offer:

- Small class sizes
- Free bus to and from school
- Breakfast on arrival
- Experienced teacher and learning assistant
- Targeted learning
- A beautiful, well resourced school
- Strong ties with Darkinjung and Barker College, with alternate weekly visits
- Stationery and uniform is supplied

We care and want the best for all our students. Come and see what we have to offer!

Tom Spencer
Director of Aboriginal Campuses NSW

Ph: 0456 694 091 | tspencer@barker.nsw.edu.au
kcunningham@barker.nsw.edu.au (classroom teacher)



Laguna Public School

3738 Great North Road

Laguna NSW 2325



Courage, Compassion, Honesty, Responsibility and Respect

End of Term 1

The last week of Term 1 was packed with memorable events. We had our annual Easter Hat Parade—and saying I was impressed doesn’t quite capture how I felt about the creativity on display. Our students showcased incredible skills through their innovative and original designs. I’ve taken note: next year, winners will be drawn from a hat, because every entry was a winner in its own right. Well done, everyone!

We also held our Fun Run for all students. With beautiful weather on our side, it was fantastic to watch students give it their all. The run was a lead-in to the Zone Cross Country, which is happening today. Over 20 students will be representing Laguna—some of our youngest competitors included! Good luck to all—we look forward to hearing about your experience.

In that final week, our swimmers headed to Sydney to compete at State level—what a nerve-wracking experience (for me!!!). While the students had some nerves too, I was so proud to see them embrace the challenge and represent our school with pride. They swam incredibly well. A big thank you to the families for their support and to Simone for the dedication she puts into making these opportunities possible. [Congratulations](#), swimmers!

Hot chip readers! In the final week, we also celebrated our reading initiative by sharing some delicious hot chips. More importantly, we recognised the effort families have put into supporting this valuable programme. Literature supports every aspect of learning and broadens students' knowledge across countless topics. Listening to, reading, and discussing stories builds vocabulary and conversation skills. This term, we’re continuing our home reading initiative. As the weather cools, students can earn stationery items and enjoy a delicious spaghetti bolognese lunch cooked by Mrs Zoneff. Happy reading!

Easter Barbecue

The Laguna BBQ team was a well-oiled machine at the markets! It was wonderful to see so many families helping out on the day. This event has become a major fundraiser for the P&C, and the support from the school community was amazing. A huge thank you to everyone who helped on the day and behind the scenes—creating posters, sourcing drinks, and organising everything. Special thanks to Richard for his coordination, Shane for his drill-sergeant leadership, Morgan for her styling, and Janine for her endless running around. What a team—and what a result for our school!

ANZAC Day

Some of our students participated in the dawn service at ANZAC Park in Wollombi. It was a privilege to attend and work with the students. They read about service animals, laid wreaths, lit candles, and sang a moving song beautifully. The service was organised by dedicated locals, including Simone, with lots of support from Jodie and Tim Usher. [Congratulations](#) to everyone involved, and thank you to the families for supporting your children’s involvement. It was a truly memorable morning.





Wollombi Valley
Landcare
Group Inc.

Weed of the month:

Lantana (*Lantana camara*)

Be on the lookout for this unwelcome, thorny guest!



Photo credit: NSW WeedWise

Those of us who have lived in temperate, coastal climates will be aware of how quickly lantana can spread, smothering pre-existing vegetation. Like Sydney and the Central Coast, the Wollombi Valley typically has the pink and yellow variety (pictured).

Lantana originates from the tropical and sub-tropical areas of Central and South America. The shrub grows vigorously in areas of high rainfall with well-drained soils but can tolerate dry spells and poor soils. It stops growing when temperatures fall below 5 degrees and generally avoids frost zones.

The shrub grows up to four metres in height, forming dense thickets. It can scramble higher into trees and smother the understory. Lantana spreads by seeds, which ripen to purply- black, and by layering. Its squared stems have an abundance of thorns, and the plant exudes a pungent smell when touched.

All parts of Lantana are highly toxic and deadly to animals if ingested. Livestock will eat the plant if pasture feed is low. Eradicating lantana is difficult and if completely removed from slopes, can expose soil to erosion. For control measures, consult the references below.

Sources: NSW WeedWise: www.dpi.nsw.gov.au/Weeds/TreeofHeaven and weedsAUSTRALIA:www.weeds.org.au/profiles/tree-of-heaven

Shopping in early Wollombi.

The first shop in Wollombi was located on the corner of Negro Street, where our Tennis courts are today. The proprietor as Michael Bourne, an Irish man, well educated, who had been sent to NSW as a convict because of his activities during one of the Irish rebellions against the English. After serving his time, he established the Wollombi shop by 1840. He also acquired farmland just to the east of the town, Avoca is part of that. In the evenings he personally tutored some of the young people of the district.

On the site of today's Tavern, the first use that we have a record of is a butcher, then a tavern was established but it ceased to trade in 1883 and a shop occupied the building in the 1880s.

Across the road, where we have a vacant site today a shop was established around the 1850s ??? which became a hotel for a few years in the 1890s and then became a shop again until the 1960s.

The site of today's General Store first traded as the Harp of Erin hotel and then traded as a general store from the 1870s until the 1960s then closed for about 20 years before re-opening again in the 1980s. There is a record that for a period in the 1930s no shop was trading in Wollombi. In the Museum is a ledger which records some of the business done at the shop.

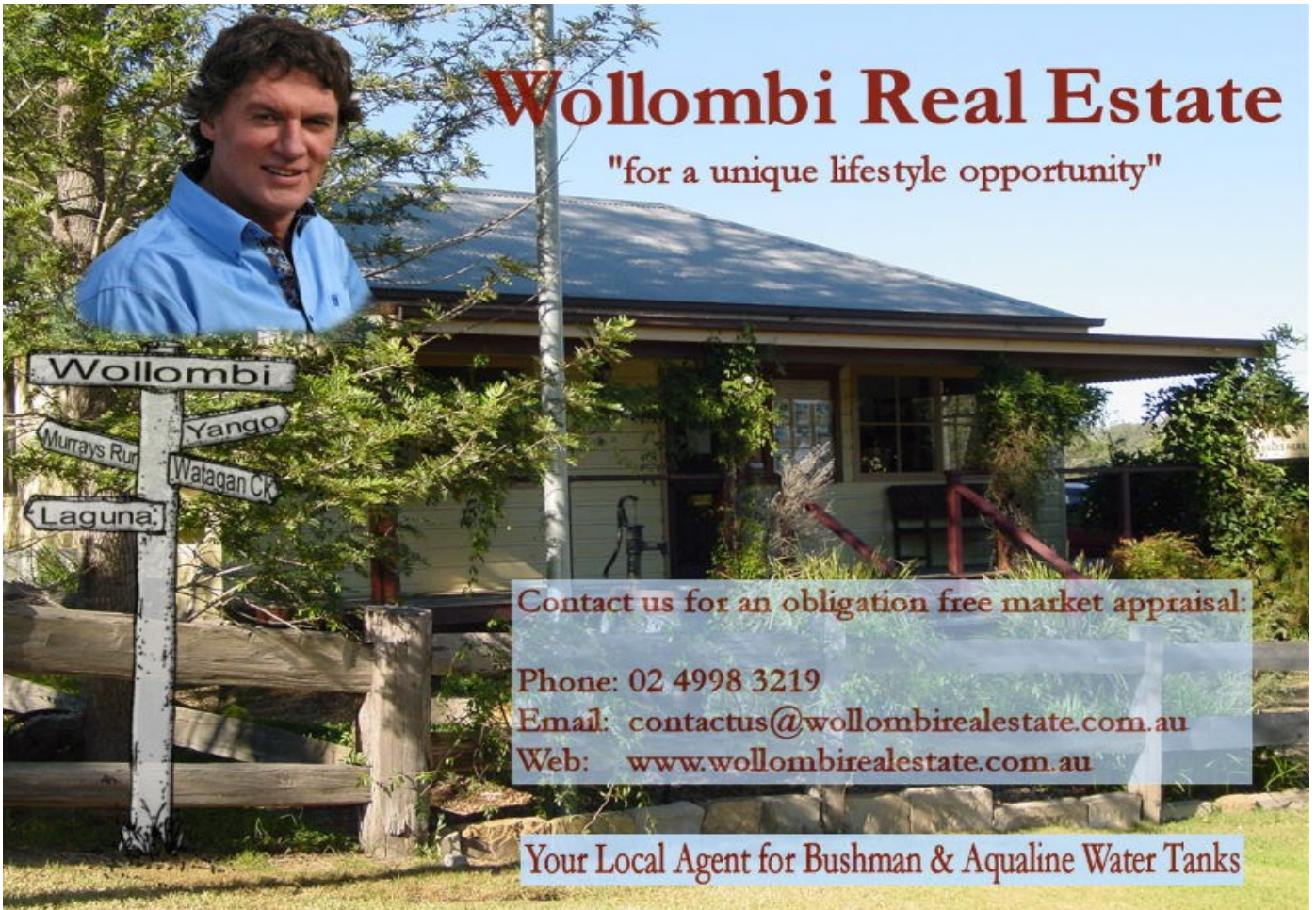
Across the road at the building trading as Twine today was a shop run by the Elliott family in the 1850s, which was packed with people in the 1856 flood who had evacuated their homes in the lower part of the town.

Merchants were a feature of the supply of goods in the early days, and would make arrangements with say a hotel to bring a range of goods that the stores may not carry and have a sale for one weekend or so.

Most homes grew most of their own food; fruit & veg., poultry. Some farmers would butcher their own animals and divide the meat with three others, so it could be consumed quickly, before it went bad. Small animals, pigs, goats, sheep were best for this.

Carl Hoipo

Articles of the Colonial Era by historian Carl Hoipo



Wollombi Real Estate

"for a unique lifestyle opportunity"

Contact us for an obligation free market appraisal:

Phone: 02 4998 3219
Email: contactus@wollombirealestate.com.au
Web: www.wollombirealestate.com.au

Your Local Agent for Bushman & Aqualine Water Tanks

WOLLOMBI GARDEN GROUP

Our June outing was to the gardens at Noonaweena in Kulnura. The weather was perfect and the coffee & pastries were pretty good too.

The views looking out west to Yengo Mountain are amazing. Noonaweena is a breathtaking 100-acre property set high in the Central Coast hinterland, overlooking the stunning Yengo National Park. The gardens are beautifully landscaped and blend seamlessly into the surrounding natural bushland. There were manicured lawns, native gardens featuring a variety of Australian flora, tranquil walking trails, and peaceful outdoor seating areas perfect for taking in the panoramic views across the valleys. We also found some friendly free-range peacocks and chickens wandering the grounds, adding a touch of charm to the experience.

I haven't secured a garden for June yet but I'm working on it. Feel free to contact me if you would like us to come visit your garden in the future. Or if you wish to be included on our email list.

JUDY ZIEREN
0405-281 845





Up until the recent deluge, Tennis members have been enjoying good playing with lovely Autumn weather conditions.

Fortunately our courts have been spared damage and with the sun shining again, games are now back to normal.

Come and enjoy a hit! Contact us to find your next game. Contact: Julia 0403-500381

Our recent Bunnings BBQ fundraiser was held on Saturday 10th May. Thank you for all the members, volunteers and those patrons whom supported this successful fundraiser!

Don't forget ...Monday is card night.

Come and join in. All players welcome!

6pm on last Monday of the month

Wollombi Tennis Club

Inquiries: Jan Harrison

janeceharrison08@gmail.com



AGRICULTURE • COMMERCIAL • RURAL • INDUSTRIAL

Australia's Leading Water Solutions Network

- ◆ Water Treatment
- ◆ Pump Systems
- ◆ Fertigation
- ◆ Irrigation Systems
- ◆ Mowers & Ride-Ons
- ◆ Pipes & Fittings
- ◆ Fire Protection Systems
- ◆ Chainsaws & Generators

Ph 4373 1466

780 Peats Ridge Road Peats Ridge

www.thinkwaterpeatsridge.com.au

Musgrove Realty is a local family-owned business offering a superior real estate service. Specialising in Hunter Valley Country Properties.



Contact us today for your personalised market appraisal.

Ph: 4998 8383

Garry: 0429 663 026

Kurt: 0497 281 475



MUSGROVE

- REALTY -

admin@musgroveready.com.au
www.musgroveready.com.au
Great Northern Trading Post, Laguna

WOLLOMBI STONEMASONRY & SCULPTURE WORKSHOP



Join your class members in a serene bush setting and learn the art of cutting stone. This course covers stonemasonry, sandstone sculpting, and basic profiling skills, providing hands-on experience and expert guidance to help you master these ancient techniques.

For more info contact Albert Kraan
Your Lead Teacher
0418 280 367
wollombisandstone@bigpond.com
+61 418 280 367

53 Glenloona Road
Laguna NSW 2325, Australia

Finding guidance
during a difficult time
is comforting.

That's why
people turn to us.



MB

**MAURER & BRACKS
FUNERAL DIRECTORS**

94 13 13 77
Ken Maurer 49 98 33 80
www.maurerfunerals.com.au
office@maurerfunerals.com.au

WOLLOMBI SANDSTONE

ABN 79622475176 Established in 1989

Naturally Sustainable



02 4998 8340
+61 418 280 367

wollombisandstone@bigpond.com

By appointment only



FAIR DINKUM BUILDS Sheds & More
TOPLINE SHEDS

- ✓ Design.
- ✓ In-house Council.
- ✓ Concrete.
- ✓ Installation.
- ✓ Fit out.
- ✓ Plumbing.

Display Village -
6 Caledonia Street Kearsley NSW 2325
Phone - 02 49 912977
Email - topline@fdbuilds.com.au



**SUPPORT OUR COMMUNITY
VOLUNTEER NOW**

See our back pages for groups to join

OON Subscription form, complete below or email to oon_news@hotmail.com

I would like a 12month Subscription to OON via **Email (Free)** or **Post (\$60)** Renewal ? Yes No

Name: _____ PH: _____

Postal address: _____

Email address: _____ DATE: _____

Post this form and a **cheque** payable to WVPA Inc./OON to OON Subscription C/- Wollombi General Store, Wollombi NSW 2325 or enclose this form and **cash** in an envelope and pop into the OON box at the Laguna or Wollombi General Stores.

Wollombi of Old

WOLLOMBI. 30th JUNE 30. 1851.

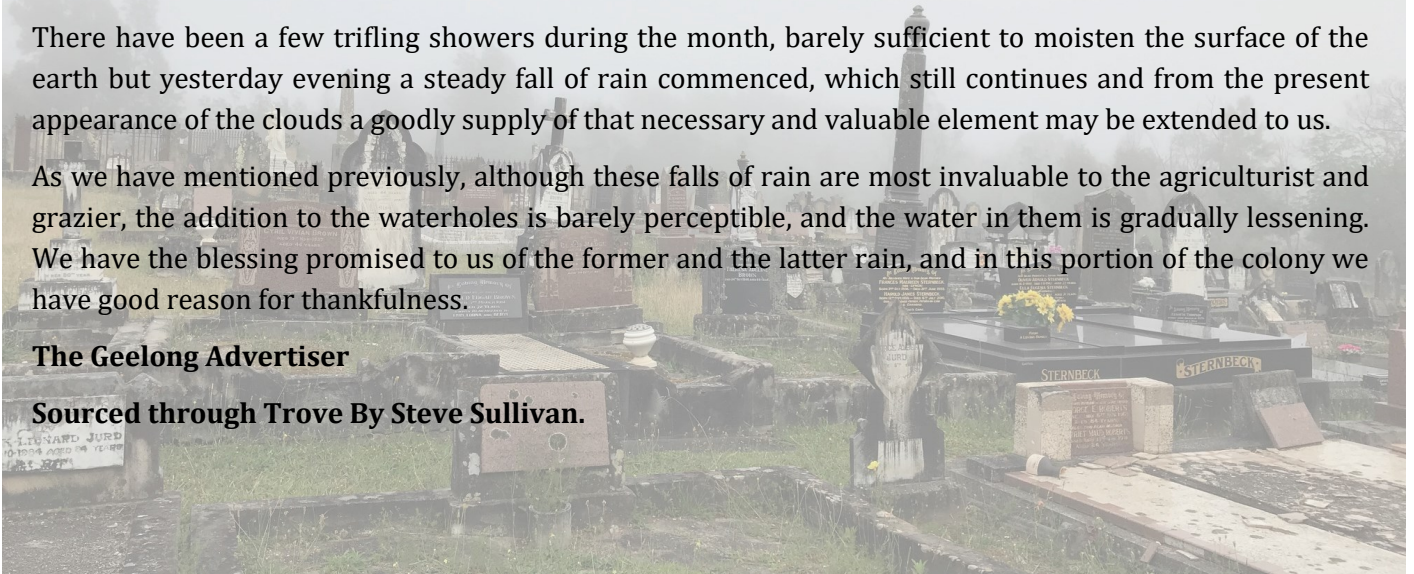
The past season has been peculiarly favourable for farmers, but all of them have not been equally industrious in getting the wheat crop sown, and the plough is still kept going in preparing the land for that important purpose. The winter has been very mild until the 20th instant, when very keen frost set in; however, it has only been such for four or five nights.

There have been a few trifling showers during the month, barely sufficient to moisten the surface of the earth but yesterday evening a steady fall of rain commenced, which still continues and from the present appearance of the clouds a goodly supply of that necessary and valuable element may be extended to us.

As we have mentioned previously, although these falls of rain are most invaluable to the agriculturist and grazier, the addition to the waterholes is barely perceptible, and the water in them is gradually lessening. We have the blessing promised to us of the former and the latter rain, and in this portion of the colony we have good reason for thankfulness.

The Geelong Advertiser

Sourced through Trove By Steve Sullivan.



Total Pumps & Irrigation

**19 Cessnock Street,
CESSNOCK**

02 4990 9444

The only place in town to buy all your, pumping and irrigation equipment!

We sell

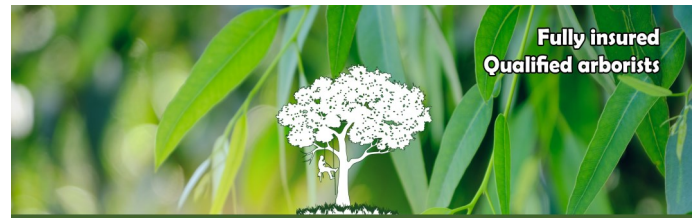
- | | | |
|--------------------------------|---------------------------------------|---------------------|
| Water tanks | House pumps | Dam aerators |
| Household filters & Cartridges | solar pumps | Dam pumps |
| Drip lines for gardens | Pool pumps | PVC pipe & fittings |
| Poly pipe & fittings | Pool filters & Cartridges | Pool Chemicals |
| Garden hose & fittings | Brass & gal fittings | Bore pumps |
| Septic pumps | Ultra violet light filtration systems | Septic pumps |
| Pond pumps | Silvan spray equipment | Trenching |



Don't wait till it's too late!

Come in store for all your fire needs.
We service and sell all brands.

We repair all makes & models of pumps either in store or onsite. Call us for a free quote on all your irrigation needs. We can install or help you with a DIY system.



Fully insured
Qualified arborists

Wollombi Valley Tree Services

Contact us for a free site inspection and quote

0411 521 875

Tree removal
Tree pruning
Stump grinding/removal
On-site firewood cutting

Notices and advertising in Our Own News

Payments for Advertising and notices are what keeps the OON going and we are happy to provide a rate sheet.

If you are interested in advertising in the OON or placing notices please contact us to assess what costs are involved.

oon_news@hotmail.com

Council Notifications which may be of interest to the community



Free microchipping for dogs living in Cessnock LGA

Dog owners can have their four-legged mates microchipped free of charge next month, thanks to a Cessnock City Council effort to promote responsible pet ownership across the local government area.

A free drop-in microchipping session will be held next to Huntlee Park, on Triton Boulevard, between 10am and 12.30pm on Wednesday, 11 June.

Cessnock City Mayor Daniel Watton said microchipping dogs is not only a legal requirement, but ensures lost pets can be returned home as soon as possible.

"For many people, their dog is considered a member of the family, and this Council initiative will help ensure these beloved creatures are safe," said Clr Watton.

"I strongly encourage anyone whose dog is not microchipped – or anyone who wants their dog's microchip scanned to ensure the details it contains are up-to-date – to take advantage of this free offer."

Usually, microchipping a companion animal typically costs between \$60 and \$80 in NSW.

Participants are asked to ensure their pets are on leads or in a carrier on the day, and throughout the duration of the event.



Spotlight on legal considerations to help Cessnock LGA residents plan for future

Cessnock Library will host a free information session on wills, estates, enduring guardianship, and power of attorney between 10am and 11am on Tuesday, 20 May 2025.

Experienced solicitor Lisa Littlewood, of the firm Hallam & Littlewood, will run the event aimed at empowering community members with the knowledge they need to make informed decisions about their future and protect their loved ones.

The session, titled 'Plan For Your Future: Wills, Estates & More', will be held as part of Law Week NSW 2025.

It will give participants a comprehensive understanding of:

wills - ensuring your wishes are followed after your passing

estates - understanding the process of managing assets and liabilities

enduring guardianship - appointing someone to make medical and lifestyle decisions on your behalf if you become unable to do so

power of attorney - designating someone to manage your financial affairs.

Library Services Co-ordinator Rose-marie Walters said it was crucial to plan ahead to ensure peace of mind and safeguard the future of loved ones.

"This session offers valuable insights into important legal matters and provides attendees with the information they need to take control of their affairs," she said.

"We are grateful to Hallam & Littlewood for their generosity in making this event possible."

Bookings are essential for this free event. Reserve your place by registering online at <https://tinyurl.com/2uz7yhr2>, or call Cessnock Library on 4993 4399 or Kurri Kurri Library on 4937 1638.



Community events planned to mark National Reconciliation Week

Strengthening relationships will be the focus of National Reconciliation Week 2025, with free and accessible public events planned in the Cessnock local government area.

Cessnock City Council will host a gathering at the yarning circle in Bridges Hill Park, Cessnock, from 10am on Wednesday 28 May, featuring a ceremony at 10.30am with performances and speakers sharing their reflections on this year's theme – Bridging Now to Next.

The same day, Council's youth service Cessnock Youth Centre and Outreach Service (CYCOS) will hold a faux emu egg decoration workshop from 3.30pm for people aged 11 to 18, and Kurri Kurri Library will host Wayapa Rhymetime – open to all ages and focusing on mindfulness, story meditation, and physical movements to promote sustainability, connection, and community.

A second session of Wayapa Rhymetime will be held at 10am on 3 June at Cessnock Library.

Cessnock City Mayor Daniel Watton said National Reconciliation Week was a time to reflect on the past, present, and future.

"It is a chance for the community to come together in a spirit of respect to celebrate the world's oldest continuous culture, and reflect on how we can contribute to achieving reconciliation," Cllr Watton said.

"Everyone is welcome at these free events and I encourage the community to attend."

Bookings are essential for the emu egg decoration workshop. Visit Cessnock Youth Centre's page on the Eventbrite website to reserve a spot.

Royal Scandal Comes to Life in Bitingly Funny New Play: The Queen's Nanny

Inspired by a true story the royals tried to forget, Melanie Tait's bold new comedy drama *The Queen's Nanny* takes the stage at Performance Arts Culture Cessnock (PACC) on Thursday, 26 June at 7:30pm.

From the creative team behind the sell-out sensation *The Appleton Ladies' Potato Race*, *The Queen's Nanny* unearths the little-known story of Marion 'Crawfie' Crawford - the devoted Scottish governess who helped raise Princesses Elizabeth and Margaret, only to be exiled from royal circles after publishing a memoir that offered the public its first peek behind palace doors.

Tait's razor-sharp writing imagines the private encounters between Crawfie and the formidable Queen Mother, exploring the fallout of class, loyalty, and betrayal in a monarchy obsessed with secrecy and image. The result is a richly theatrical night that's as darkly funny as it is politically timely.

In the wake of Australia's failed Voice referendum and a nation still grappling with its colonial ties, *The Queen's Nanny* hits home with striking resonance. Through the eyes of Crawfie, a woman erased from history despite her intimate role in shaping a future queen, the play questions who gets to tell their story, and why some voices are silenced.

Director Priscilla Jackman brings this powerful and poignant script to life, steering clear of royal pageantry in favour of a bold, emotionally charged performance. Don't miss this provocative and captivating production that reclaims the voice of a woman cast aside by the crown.

Tickets are on sale now at the PACC Box Office, by phone on (02) 4993 4266 or online at mypacc.com.au.

SEASON DETAILS

The Queen's Nanny

Date: Thursday, 26 June 2025

Time: 7:30pm

Duration: 1 hour 30 minutes, no interval

Where: Performance Arts Culture Cessnock (PACC)

Ticket Prices: PACC Member: \$40, Adult: \$49, Concession/Group (6+): \$45

For more information, visit <https://www.mypacc.com.au/Whats-on/25-The-Queens-Nanny>



Diary & Events

Church Services

St John's Anglican Church Wollombi is a festival church. There is a service at Christmas and Easter. Baptisms, weddings, funerals and other services are by arrangement. Please contact the Parish on 02-4991 4761 or 0418-269 892 or email: stjohnscottage@bigpond.com

Other regular Anglican church events

Suspended during Covid

St Michael's Wollombi, Mass is on the 2nd and 5th Sunday of the month at 2pm

Wollombi Valley Home Church

Meets at Tennis Club

1st Sunday of the month at 2pm, followed by afternoon tea.

Contact Keith 0409-909 971 or Pastor Neville 0467-210 478

Crafty Yarns

10am 3rd Monday monthly. Wollombi Cultural Centre

500 Cards—Wollombi

commence at 6 pm on last Monday in the month.

Wollombi Tennis Clubhouse

Contact: Jan Harrison

janeceharrison08@gmail.com

Chamber of Commerce - Wollombi Valley

General Meetings held every 2nd month. See www.wollombivalleytourism.com.au for venue.

Fire Brigade—Laguna

Training 3rd Saturday of the month with breakfast at 8.30am followed by training from 9am to 11am. Laguna Fire Station.

Members meeting 11am after training in March, June, September and December.

Fire Brigade—Wollombi

Training 3rd Saturday monthly 8.30am Wollombi Fire Station.

Members meeting 11am following training in even months, All welcome. Enquiries to brigade@wollombibushfire.org.au

Fire Brigade - Bucketty and District

Training 3rd Saturday monthly from 9am - 12pm

Members meeting 1pm on the even months.

Garden Group

1st Monday monthly.

Contact Judy Zieren 0405-281845

Conversations en francais à Wollombi

Rencontres detendues pour ceux qui veulent parler francais a Wollombi. Nous nous reunissons les samedis une fois par mois vers 17 heures chez des particuliers. On discute l'art, l'histoire, la politique, la France – avec un bon vin et fromage bien sur.

Contactez: Gwen Lansbury, glansbury@gmail.com

Ph: 02-4998 3141, 0451 693 376

Landcare Group - Wollombi Valley

Join us to learn more about caring for the land and the wildlife on it. We meet regularly for workshops, planting days and other events. New members are always welcome! Contact us at www.wollombilandcare.org.au or wollombi.landcare@gmail.com

Monthly Historical Ghost Tours

Newcastle Ghost Tours & Jo Potter Ph: 0411-357 519

Museum—Wollombi

6pm summer – 5pm winter, 1st Wednesday monthly except January, Wollombi Cultural Centre

Pony Club—Wollombi Valley

Every 3 weeks contact President Simone 02-4998 8214 for details

Playgroup (all kids 5 and under welcome)

10.30am every Tuesday, at Slacks Park Wollombi

Theology in the Pub discussion group:

4th Sun/month at Wollombi School Residence 2:00.pm

Wollombi Valley Community Association

Community meetings held during the year. Please see OON for advertising of these.

Wollombi Tidy Valleys

11am, every 2nd Thursday Bi-Monthly Wollombi School

Meeting Room. All welcome. Contact—Bernice 4991 1688

Wollombi School Community Centre:

Committee meetings held 10am on 2nd Tuesday of each month. Venue is the Principal's Cottage on Cnr of Crawford & Wollombi Roads, Wollombi. Interested persons welcome.

Transport

Grape Experience Tours 0414 457 956

Wine country taxis Cessnock (02) 4990 1111

Sport and Fitness

Pilates Classes

Mat Classes are held Wednesday 9.30am & Fridays 10.30am.

Wollombi Community Hall

Contact: Susan 0403-270 365

Wollombi Tennis

Wednesday from 5:30pm

Sunday 8:00 am

All welcome.

Contact: Julia Brooke 0403-500 381

Eureka Taekwondo

Thursdays 4pm – 5pm

Wollombi Community Hall

Contact: Steve Turner 0400-002 951

YOGA

Wednesday 7:30-8:30pm Vinyasa

Thursday 5.30-6.30pm Yin

Saturday 8.30-9.30am Hatha Flow

Wollombi Community Hall

Contact Helena 0412-369 291

Zumba Classes:

Fitness With Milly Monday Wollombi Hall

7:45am HIIT

9:00am Zumba Gold

Friday Wollombi Tennis Club 8:30am Zumba

Contact: Milly Ph 0414-435 576

Services

Dog and Cat Beds and Accessories 0421 431 451
 http://growls-hisses.com
 houndsfelines@mail.com

Local Accommodation

Bellbird

Tabitha Hill Cottage 0429 657 166

Laguna

Byora Farm House 02 4998 8227
 Ipakey Cottage 02 4998 3219
 Kawalang Studio –Bucketty/Murrays Run 0404 896 396
 Laguna Cottages 02 4998 3219
 Twin Pines Cottage 0403 083 381
 Valle Laguna 0408 809 471
 Valley Field Escape 0488 436 001

Millfield

Bellbird & Swallows Cottages 0414 786 705
 Neudorf Country Retreat 0414 920 013

Congewai

Brown Muir Cottage 0409 416 416

Wollombi

Applegums 0419 416 416
 Blair Athol Estate 02 4998 3323
 Capers Cottage 0409 305 285
 Cedar Creek Cottages 02 4998 1576
 Corrabare Cottage 0409 416 416
 Cowboys Cabin 0423 109 558
 Cranky Rock Cottage 0438 757 442
 The Farm @ Hunter Escape 0418 114 303
 Grays Inn 02 4998 3483
 Gypsy Willows 02 4998 3404
 Hollybrook Hunter Valley 0411 968 873
 Hunter Valley Escapes 0409 416 416
 Ironbark Cottage 02 4998 3427
 Maggies in Wollombi 0416 039 081
 Mystwood Retreats 02 4998 3234
 Myrtle Cottage Accommodation 0409 416 416
 Pepper Tree Cottage 0416 039 081
 Redleaf Hunter Valley 0412 566 637
 Somewhere Unique 02 4998 3257
 The Studios 02 4998 3182
 Tiny Escape 0426 891 870
 two8seven5 Boutique Stays 0437 977 798
 Undercliff Settlers Cottage 02 4998 3322
 Wild Edge Retreat 02 4998 3304
 Wollombi Barn Stay 02 4998 3221
 Wollombi Birdhouse 0423 376 804
 Wollombi Brook Family Farm Stay 0422 515 905
 Wollombi Bush Retreat 0432 156 396
 Wollombi Farm Country House 0416 039 081
 Wollombi Stays 0416 039 081
 Woodcutters House 0416 039 081
 Yango Creek Farmhouse 0416 039 081

Restaurants, Pubs and Stores

Laguna Village Providore 0478-712613
 Millfield General Store 02 4998 1263
 Myrtle & Stone Cafe 02 4998 3220
 The Trading Post Laguna 02 4998 8244
 Twine Home Store 02 4498 3331
 Wollombi Café—Next Door 0408-599177
 Wollombi General Store 02 4998 3230
 Wollombi Tavern 02 4998 3261

A NOTE FROM THE OON TEAM

Our Own News is a Wollombi Valley Community Association (WVCA) initiative co-ordinated by volunteers.

Articles or advertisements must be emailed as a **word file** with photos attached as a separate **jpeg** file to **oon_news@hotmail.com** no later than the *15th day of each month* for publication in the following month's edition.

Articles are not edited but printed as received unless otherwise agreed and there is no guarantee of publication. Articles must be no longer than 200 words.

WVPA and the OON Team accept no liability for statements made or opinions expressed and are not responsible for the veracity of articles or advertising material.

Opinions expressed in OON are not those of WVCA or the OON Team, although they have the final word on content. If you are mentioning someone in an article please check details and facts with them and obtain their permission prior to submitting any articles for print.

All rights reserved: no part of artwork/photography for this publication in whole or in part may be reproduced without the permission of the OON Team. We welcome your comments by email. We hope you enjoy reading your copy of OON and thank you for supporting our community.

The OON Team