

Se Non E Vero, E Molto Ben Trovato Issue 504 July, 2025

\$2

Our Own News



MAGICAL WOLLOMBI
VALLEY

UPCOMING EVENTS

Save the date!

JUNE:

Fri 27th—Latin Night Party & Dance workshop

Ph: Johan 0413-941 547

JULY:

Mon 7th Garden Group -see back pages

Sun 13th Landcare AGM -10-12:30pm Venue upon RSVP

Sat 19th Wollombi Tennis club AGM -4pm at Tennis Club

AUG

Tue 12th Wollombi School AGM 10am at school residence Cnr Crawford St & Wollombi Rd

Fri 15th Laguna Art Show dinner

Sat 16th/Sun 17th Laguna P&C Art Show

Fri 25th Wollombi Chamber of Commerce AGM -venue TBA

Congratulations to the new owners of the Wollombi General Store.

The Wollombi Valley Community Association wish the Redleaf team every success for the future and continuing to provide our village with such a valuable service.

Drop in and support Jacqui Moffitt, Shea Piggot who are the front and centre of the store and support our local businesses.

We would also like to send a huge Thank You and best wishes to Cath & Steve Patterson for the many years of business and support to the community, and a well deserved feet up!

Keep an eye out for next issue where we will deep dive into the early history of the General Store(courtesy of local historian: Carl Hoipo) and enjoy some tales over the years from the previous owners, Cath & Steve.

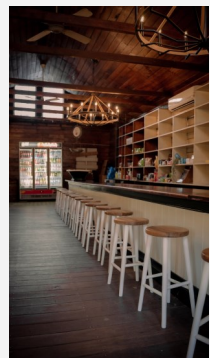
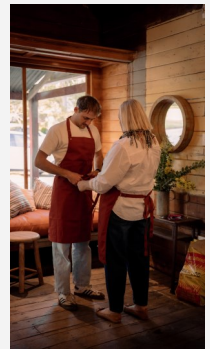


Photo Credit: @Wollombi Valley

VALE PHOEBE SALTER

It is with great sadness to announce the passing of Phoebe Salter.

Pheobe was a long time member of the Wollombi Tennis Club and community and will be missed by those who knew her.

Phoebe's funeral will be on this coming **Wednesday, 25th June, 2pm at St Johns Church, Wollombi.**

All welcome.

THANK YOU!

Another magical event and evening hosted by The Wollombi Tavern for Cracker Night on June 10.

Always spectacular and again did not disappoint.

Thank you to the dedicated and hardworking Tavern Team for another generous event for our community and visitors to enjoy!

Front Cover: Photo credit Heather McMullen



Chamber Chatter

News from your Wollombi Valley Business Chamber

What a long weekend! Congratulations to **all our local businesses and accommodation** providers for an outstanding long weekend. Reports are in, and we're thrilled to share that trading hit *record highs*—a testament to the vitality of the Wollombi Valley and the incredible experience we continue to offer visitors. ✨ Once again, the **fireworks at The Tavern stole the show!**

A warm welcome to the new owners of the **Wollombi General Store**. This icon in the heart of the village is in safe hands for a smooth transition and many happy years of trading ahead.

While we didn't take out a top spot in this year's **Tiny Towns Awards**, we send a hearty *congratulations* to **Huskisson** and **Broke**, who placed first and second, respectively, for the second year in a row. The recognition of these neighbouring gems only fuels our drive, and we're proud to be in such great company.

Your Chamber Committee will be meeting with Council on **Monday 23rd June**, with **Sean Wardman**, Project Manager for the Wollombi Road upgrade, attending to provide a much-anticipated update on the **T-intersection redesign and High Pedestrian Traffic plans**. We'll keep you informed on key outcomes following this discussion.

Save the date! Our **Chamber AGM** will be held on **Monday, 25th August**—more details to come, but we encourage all members to join us in shaping the future of the Chamber.

What's On in Wollombi this June Check out these upcoming events

www.visitwollombi.com.au

- **What the World Needs Now** – an avant-garde exhibition of mixed media
Friday 20 June | A creative feast for the senses at this bold and thought-provoking show Old Fireshed Gallery opening 4 pm – 7 pm.
- **Winter Solstice Sacred Circle** – hosted by Wollombi Yoga
Saturday 21 June | Connect, reflect, and celebrate the season in a nurturing space
♀️ <https://staroffhesea.as.me//reallyconnect>
- **Latin Night Party** – 3-hour dance workshop
Friday 27 June | Spice up your evening with rhythm, movement, and fun To book, call Johan 0413 941 547

Until next time .. WVCC - Deb, Trish, Graham, Annie & Sharon



An advertisement for 'Art N Sip' featuring a background of colorful paint splashes in red, orange, and yellow. In the foreground, a paintbrush with red paint is shown. Below the paintbrush, there is a photo of three people (two women and one man) standing in a studio, each holding a small framed artwork. The text 'ART N SIP' is prominently displayed in a large, white, serif font, with 'Classes or High Tea groups' in a smaller font below it. At the bottom, it says 'The Makers Studio' and 'HOLLYBROOK HUNTER VALLEY'. A tagline reads 'Bring your creativity - take home a masterpiece!' and there are social media icons for Instagram and Facebook. At the very bottom, it says 'Open to everyone - info & bookings: hollybrookhuntervalley.com/art'.

Wollombi Valley Pony Club

Finally our Pony Club Shed is a happening thing!

Since the 2022 floods, Wollombi Pony Club has not been able to house club resources and has needed to transport equipment to and from the Pony Club ground.

After a few years of discussions with Cessnock Council, Crown Lands and navigating Grant Funding and Flood Recovery Insurance, we now have a fabulous outcome!

Thank you to Melissa Boucher and Cessnock City Council for your continued support. Topline Sheds has notably contributed many voluntary hours in seeing this project through to providing the outcomes we hoped for. Thank you all!

Regards,
Simone Smith
Wollombi Valley Pony Club.



HORSE FOOD IN LAGUNA

88 Murrays Run Road, Laguna

Ph: 0408 495 623

E: aptrak@hotkey.net.au



"By Appointment"

Aptrak Stud stocks **Horse feed**, including:



Lucerne chaff, Oaten chaff, 50/50 chaff, Hay, Gumnuts, Easi Sport, Easi Response, Easi Fibre, Biomare, Copra, Rice Bran, Beet & much more!

Chicken feeds, Sheep, Cattle & Alpaca pellets

As well as we order in: Meals for Mutts, Meals for Meows, Ivory Coat, Supercoat, Advance, Optimum, Fancy feast, Chicken, Bird, Fish & Rabbit food.

Some stocks of pet toys, grooming products, horse rugs & accessories.



Aptrak home grown horses: bred, raised and trained at Laguna!



FAIR DINKUM BUILDS Sheds & More

TOPLINE SHEDS



- ✓ Design.
- ✓ In-house Council.
- ✓ Concrete.
- ✓ Installation.
- ✓ Fit out.
- ✓ Plumbing.

Display Village -
6 Caledonia Street Kearsley NSW 2325

Phone - 02 49 912977

Email - topline@fdbuilds.com.au



OUR AGM is on 12 AUG 2025 at 10 am at the School residence on the corner of Crawford Street and Wollombi Road.

This is also a call for those members who would like to nominate to be on the Committee 2025-2026.

All our members are advised that membership fees (\$10 per annum) are due and required for eligibility to vote.

NEW MEMBERS are most welcome to join in our endeavours to retain this heritage school in community hands. Either contact secretary@wollombischool.com.au or go to our website <https://wollombischool.com.au/membership/>

BANK DETAILS are on the membership forms. You can also pick up hard copies from the Wollombi General Store. Both **NEW** and **ONGOING MEMBERS** are asked to fill in a membership form at the time of fee paying.

EXPRESSIONS OF INTEREST are sought from the community for use of the Centre's facilities (e.g. Art Studio, large or small meeting rooms) within the residence on days on which they are not already in use by the Pre School or other groups.

Looking forward to hearing from you.
The Wollombi School Community Centre Committee

Greater Wollombi Valley Community Resilience Network

Getting Health and Support Services in the Greater Wollombi Valley



The Hunter New England Central Coast Primary Health Network (HNECC PHN) is conducting a health needs assessment for our Valley. Many thanks to Melissa Boucher, Resilient Officer at Cessnock City Council, for directing the HNECC PHN team here as they assess the needs of the Cessnock LGA. The survey is a prelude to working out how they can support health services here so that people of all ages can thrive, live independently, and have access to care.

Two sessions were held in Wollombi and Laguna on Monday, June 16, with more than 30 people participating, sharing their views, completing an online survey and having a cuppa.

You can share your views too by filling out the online questionnaire accessible through the link below. If you need a hard copy of the survey, contact info@greaterwollombiresilience.org.au or go to our website www.greaterwollombiresilience.org.au Responses online or on the hard copy are anonymous and privacy is respected.

This is an incredible opportunity to get the services we need into our Valley.



Be connected!

email: info@greaterwollombiresilience.org.au
website: www.greaterwollombiresilience.org.au
facebook: Greater Wollombi Valley Community Resilience Network



Wollombi Valley Tennis & Sports Association Inc" AGM is on Saturday 19th July, 4pm at the Wollombi Tennis Clubhouse, Negro Street, Wollombi.

We invite all members and those interested in joining the club to come along and hear about our last year. Join us for drinks and nibbles after the meeting.

Pickleball - we are planning another Pickleball afternoon at the tennis club on Saturday 28th June. We will start earlier at 2pm, \$5.00 for those who have played before, free for first timers. It's a fun game and we will have two courts up and running. Join us for play, tea and coffee and something sweet to eat.

Julia Brooke - Club Secretary
Wollombi Tennis Club
0403 500 381

Proud member of the

Australian Federation of CIVIL CELEBRANTS
Llynda Nairn JP
0425 279 939
llyndanairn@gmail.com
YourCeremonyYourStory.com.au

Based in Millfield, serving the Hunter and Beyond!
Marriage Celebrant : Commitment Ceremonies
MC : Milestone Family Events : Baby Namings : Funeral Services

Laguna Public School

3738 Great North Road

Laguna NSW 2325



Courage, Compassion, Honesty, Responsibility and Respect

Lovin' Learning at Laguna!

Term 2 has been packed with everything – and we still have a few weeks to go! We've had a trip to Canberra, incredible artworks taking shape, exciting historical discoveries, and even a flood to keep us on our toes. It's been amazing to watch our beautiful students embrace every opportunity without letting anything dampen their spirits.

Djuramba headed to Canberra with Kenny behind the wheel – and what an adventure it was! We only scratched the surface of what our capital city has to offer, but the experience has deeply enriched our classroom learning. The War Memorial left a lasting impression, and it was an absolute honour for our students to take part in the afternoon service, laying a wreath and carrying out official duties. Questacon was a blast, and we loved seeing the future of Australian sport at the Australian Institute of Sport. The students were outstanding, giving me the best camp experience I've ever had – I'm already planning our next adventure!

Gillian Hewitt has been working with us, engaging students with the native species around us. The variety of techniques and the quality of student work have been outstanding. Gillian is a phenomenal talent and a true asset to our school. This year, she's also worked with a select group of students, and I've had the absolute pleasure of sitting in while they create. Art is well and truly alive across the valley, and the talent of these young people is truly remarkable. Some of their pieces will be on display at our upcoming Art Show – get ready to be astonished by their abilities!

We've been diving into Australian history across the school. Bandar have been exploring Aboriginal history, Gudumang have looked into European settlement, and Djuramba have been investigating the formation of parliamentary rules and Prime Ministers throughout history. It's a shift from our science focus in Term 1, but it's sparked passionate conversations – including some fiery reactions to past injustices.

The week of relentless rain was certainly challenging for some families, but I'm so grateful for the way our community pulled together. We were incredibly lucky to remain open and functioning every day except Friday, and our students were a delight. They happily played with Lego, created incredible chalk artworks (sorry, Denise!), and were keen to lend a hand wherever needed. I also want to commend our amazing staff, who showed up each day ready to do whatever was needed. Their dedication is truly appreciated.

The rest of the term is shaping up to be busy, busy! We've got the Small Schools Athletics Carnival, Soccer Gala Day, K-4 Excursion, Rewards Day, Parent-Teacher Interviews, and of course, lots more learning!

Jac Zoneff



P: 0249 98 8251 E: laguna-p.school@det.nsw.edu.au

W: laguna-p.schools.nsw.gov.au F: LagunaPS



Education



WOLLOMBI VALLEY ARTS COUNCIL INC. ARTS NEWS

What's on at the Wollombi Cultural Centre

June – July 2025

The Wollombi Valley Arts Council encourages and fosters all kinds of artistic and cultural expression within the Wollombi Valley in order to support and promote artists and our community. Please visit our website www.wollombi.org

'WHAT THE WORLD NEEDS NOW!'

Featuring artists...

STEPHANIE VELLA
KERRYN RACO
RODE VELLA
CAMPBELL MURRAY
SIMON MARINER



21 June - 6 July 2025

OLD FIRESHED GALLERY
WOLLOMBI CULTURAL CENTRE

This exhibition is a growing conversation. Visitors are encouraged to scrawl their own ideas, hopes, and solutions - becoming part of a collective vision for a better future. Through recycled materials, playful disruption, and a defiant spirit of non-conformity, this mixed-media exhibition urges us to rethink what we value and how we live. It asks: *What if the solution isn't out there, but right here-in our homes, our communities, our own hands?*

A collaboration with a clear message: we can all make a difference.

From fashion made with purpose to sculptures that re-use discarded objects, from sonic art that stirs the senses to interactive spaces where visitors can contribute their own visions, this show celebrates creativity as a force for change.

Our next exhibition...

'TAOTCS' : THE ARTISTS OF THE OLD CHURCH STUDIO

12 – 27 July in the Old Fished Gallery

This exhibition brings together the diverse work of a collective of artists who share both a studio space and a deep passion for art. Each artist brings their own voice to the exhibition, landscapes, abstracts, miniatures & drawings.

WVAC EMERGING ARTISTS AWARDS 2025

We proudly invite entries in the 15th Emerging Artist Awards, 4th - 19th October 2025.

Please visit www.wollombi.org for details and to download entry forms

(Note: An Emerging Artist is defined for these awards as one who has not held a solo exhibition in a commercial gallery) Artworks must have been completed in the last two years and be for sale.



Total award money now \$8,000
Exhibition Opening and Awards Presentation:
Friday 3rd October at 6.30pm

Entries close 5pm 28th September 2025

Judges: JOSEPH TURRIN (Curator Performing Arts Centre, Cessnock), MANDY DAVIES, GREG MAJOR (2325 Australian Flora Award)

OPEN SECTION: (Painting, Sculpture, Photography, etc)

Emerging Artist Award \$1,500, Highly Commended \$1,000, Commended \$750

WVAC 2325 Wollombi Award \$500 (Local artist or Wollombi subject matter)

2325 Australian Flora Award \$500 (Australian flora subject matter, local artist)

Sponsored by Greg Major, Future Harvest

Photography Award \$500

Portrait Award \$500 *new*

Sculpture/3D Award \$500 *new*

Indigenous Artist Award \$500 *new*

WVAC Performance Art/Video Art Award \$500 (Entry via a maximum 3 - minute video)

Youth: Under 18's: Highly Commended \$250, Commended \$100, Under 12's: Highly Commended \$100, Commended \$50

The Les Elvin People's Choice Award (announced at the close of EAA)

Most popular \$500

Runner Up \$250

Wollombi Valley Arts Council Inc.

Email: artscouncil@wollombi.org

Web: www.wollombi.org

F/B: <https://www.facebook.com/artscouncilwollombi>

<https://www.facebook.com/littleyengogallery>



Wollombi Valley
Landcare
Group Inc.

Notice of Annual General Meeting of the Wollombi Valley Landcare Group Inc.

Sunday, 13 July 2024 at 10:00am to 12:30pm. Followed by snacks, drinks and general good cheer.

RSVP to wollombi.landcare@gmail.com by 6 July for catering purposes. Event address supplied upon RSVP.

Agenda

1. Acknowledgement of Country
2. Attendance and apologies
3. Minutes of the previous AGM
4. President's report
5. Treasurer's report
6. Election of office bearers
President, Vice President, Treasurer, Secretary,
Committee (x 3)

Nominations for office bearers should be emailed to wollombi.landcare@gmail.com by 6 July.

The AGM will be immediately followed by a General Meeting.

VALE Peter UDODZIK

Loving Memory of Peter
12.07.1948 - 15.05.2025

Peter left us peacefully after battling illness for some time.

Peter was the brother of Olga Hietbrink, and father to his three children: Melissa, Paul Udodzick and Hannah Udodzick. He was also grandfather to Emily, Shaye, Ayden and Sam whom he cherished and was his greatest joy and legacy.

He had a connection to his Ukrainian heritage. A funeral service honouring Peter's life was held at the Ukrainian Catholic Church Adamstown on the 23rd of May, 2025.

His body will be 'laid to rest' at Sandgate Cemetery in the near future. If anyone wishes to attend the service to say their final goodbye, please contact Olga Hietbrink on 0411488349 for a confirmation date.

Weed of the month:

Trad (*Tradescantia fluminensis*)

A rampant pest in our bushland and gardens!



Photo credit: Wikipedia

Most readers will have encountered this fleshy groundcover which is extremely difficult to control. While it is easily pulled out or rolled up, if a root or piece of stem is left in or on the ground, it will quickly propagate and spread.

Trad likes rich, damp soils which is why it loves to spread along riparian zones and in gardens, smothering and out competing other plants. While frost will temporarily blight the leaves, if the stems are protected by leaf litter, it will regrow once the weather warms up.

The leaves are dark green and shiny with a pointed tip. Trad flowers are white not blue. It is often confused with a very similar looking native creeper, scurvy weed (*Commelina cyanea*). Trad leaves tend to be purple on the reverse and are broader and shorter on thicker stems.

The sap in trad can cause allergic reactions in animals, particularly dogs who can develop dermatitis around the muzzle or belly.

For control measures other than careful weeding, go to NSW WeedWise.

Sources: NSW WeedWise: www.dpi.nsw.gov.au/Weeds/Trad and weedsbluemountains.org.au/weed/trad/

LAGUNA P&C ART SHOW 2025

We are thrilled to announce that the Laguna Art Show is back in August 2025! After a bit of hiatus, the Art Show Team is hard at work behind the scenes and gearing up to transform Laguna Hall into a high quality exhibition space showcasing the amazing artworks of our local artists. Artist entries are already pouring in, and the ladies of Wollombi Catering are already making plans for our wonderful opening night dinner.

This year, you can expect everything you have always loved about the Art Show, including a fabulous opening night with a 2 course meal and live music, and an exclusive first look at this year's exhibition.

To follow will be a wonderful weekend with the exhibition open both Saturday and Sunday, with the art show cafe on site. As always, our efforts are in support of the little faces of Laguna Public School, to provide ongoing enrichment activities and opportunities for the children of the Valley.

Our Feature Artist this year is local artist Julianne Ross Allcorn, and her feature artwork "Intertwined Songs of the Valley" will soon be seen on our posters around town.

15TH-17TH AUGUST LAGUNA ART SHOW 2025 LAGUNA COMMUNITY HALL

OPENING NIGHT DINNER

Friday 15th August

Bar Open 6pm. Seated dinner 6:30pm.

Exhibition opening 8pm **Bookings essential.**

Limited tickets available \$55pp

GENERAL EXHIBITION

Saturday 16th 10-4pm, Sunday 17th 10-2pm

Exhibition Admission - gold coin donation.

Onsite Cafe, Creative Kids workshops & art

activities. 2pm Sunday Raffle Draw.



Laguna P&C
Association

For artist submissions & Opening
Night tickets please visit:

www.littlefacesbigfuture.com



@Laguna
ArtShow

Wollombi Real Estate

"for a unique lifestyle opportunity"

Contact us for an obligation free market appraisal:

Phone: 02 4998 3219
Email: contactus@wollombirealestate.com.au
Web: www.wollombirealestate.com.au

Your Local Agent for Bushman & Aqualine Water Tanks

Greater Wollombi Valley Community Resilience Network

An Update from the Network!

Being Mentally Prepared for Emergencies Improves Response and Recovery



Recovery from the cumulative effect of the recent drought, bush fires, floods & COVID takes time. Frequent emergencies keep adrenaline pumping, elevating cortisol levels and reducing our capacity to respond effectively. There are tools that help people prepare mentally for emergencies.

Rural Adversity Mental Health Promotion (RAMPH) Psychologist Matt Milne, who spoke with community members on Saturday, June 14 at the Wollombi Tennis Club, advises that when people are better prepared, they are able to make better, faster and smarter choices. They are also more able to help others, recover faster emotionally and have fewer long-term mental health effects such as anxiety, depression and post-traumatic-stress syndrome (PTSD).

Three Strategies to prepare yourself for potential emergencies includes:

- 1) Anticipate the situation that will be stressful
- 2) Identify/name your fears (also those of your partner and family) and the physical/emotional responses that heighten your fears
- 3) Use tools to manage your thoughts and feelings (eg. worries about family, animals)

Psychological Preparation includes acknowledging your fears, creating and rehearsing a plan, keeping informed, applying simple stress-management techniques, building a support network. For more information, see our website. www.greaterwollombiresilience.org.au

Connection builds resilience. The GWVCRN can help you link up with reliable sources of information. Get Apps that provide information, including BOM <http://www.bom.gov.au/> Hazards Near Me <https://www.nsw.gov.au/emergency/hazards-near-me-app> and local updates through your neighbourhood coordinator.

For more information and to link up with your neighbourhood coordinator, email info@greaterwollombiresilience.org.au

Share What's Spare, Food & Conversation Presenter Sam Tucker provides a wealth of information about propagating seeds



Horticulturalist and seasoned plant propagator Sam Tucker presented to local community at Share What's Spare, Food & Conversation on Sunday, June 15, at Kawalang (Murrays Run).

Sam offered tools for collecting seeds from plants everywhere, storing them safely and 'waking them up' through hot water before planting them in naturally nutrient-enriched soil.

Preferring a Hugel Bed to a Wicking Bed as only natural elements are involved (buried branches and small trunks instead of plastic to support water retention), Sam demonstrated how to get seeds to germinate and to get cuttings to form roots, sharing lots of tricks made easy for both native and cultivated plants. Sam also brought cuttings from her garden to take home to get ready for spring.

Share What's Spare goodies swapped around included masks from Papua New Guinea, lamps, bush lemons, oranges, clothing and books, with a yummy morning tea, lunch and conversation underpinning the event.

Many thanks to the Foundation for Rural and Regional Renewal for their support for these community events that strengthen community connection, knowledge and resilience.

Be connected! 

email: info@greaterwollombiresilience.org.au
website: www.greaterwollombiresilience.org.au
facebook: Greater Wollombi Valley Community Resilience Network

WOLLOMBI GARDEN GROUP

June's garden Group Outing was to Armando & Gemma's beautiful garden in Wollombi.

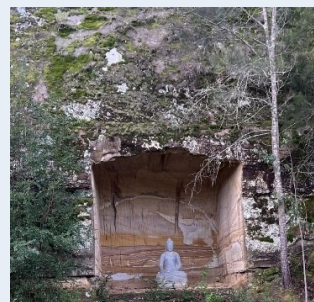
What a wonderful experience. From the formal entrance, across the flowing causeway then along the winding driveway, between the olive groves and up to the house was just lovely. But.. that was only the beginning.

We sat under wonderful shade trees and enjoyed shared plates & a cuppa before Armando took us on a tour of the garden. It is truly a feast for the eyes. The lake, vegetable gardens, fruit trees, a pencil pine avenue, the Australiana garden, the Box Topiary and to top it all off the amazing Budha in a cave.

This garden had it all as well as wonderful hosts. Many thanks Armando & Gemma. We are off to another local garden on Monday 7th July at 1.00pm. If you would like to join us but are not on the mailing list, give me a call or email to be added.

Judy Zieren

**0405 281 845 or
barryandjudy1@bigpond.com**



Wollombi Statistics..

The NSW Government was very diligent in keeping population records, doing a formal census around every 10 years during the second half of the 1800s. The difficulty for us is that the area covered changed several times. The Wollombi Court and Police District was established in 1840. This included the Lower Macdonald River (St Albans), which was transferred to Windsor in 1850. In 1906 the NSW Govt. passed a Local Govt. Act where they created Councils. In our case the first was the Shire of Kearsley, which was followed by Cessnock Shire which had different boundaries. In the 1840s & 50s magistrates also did assessments of stock numbers and farm production

The population of Wollombi Township varied as follows -- 1846 75 people --1851 105 -- 1856 176 -- 1861 233 -- 1871 222 --1881 211 -- 1891 177 --1901 146 -- The total for the district in 1851 was 1000, and in 1861 1888.

The 1841 Census showed the district as having a population of 1,155 people, 758 males and 397 females. The 1846 Census showed the district with 1,512 people, 876 males and 636 females. By the 1851 Census, the Lower Macdonald had been taken from the Wollombi, with Wollombi being left with a population of 1000, and the Macdonald 681. The 1861 Census showed a district population of 1,888.

Grevill's Official Post Office Directory 1875 – 1877 showed the following occupations for the town of Wollombi, Police Magistrate, 2 policemen, Telegraph Master, Postmistress, Blacksmith, Carpenter, Hawker, Innkeeper, Saddler, Butcher, Miller, Bootmaker, 2 wheelwrights, 2 Storekeepers, 2 Surgeons, 2 teachers, 1 Cleric, and in the wider district, 50 Farmers, 4 Graziers.

The 1820 were a time of very rapid growth for the colony, and the beginning of white settlement in our valley. The following figures are for the colony as a whole and contrast 1821 with 1828. Population went from 23,248 to 36,498. There were three times more men than women, and about two out of three people were, or had been, convicts. Livestock numbers grew much more dramatically cattle from 68,000 to 263,00 and sheep from 120,000 from 536,000. In the case of sheep, their wool could be shorn and shipped back to Britain without much trouble. In the case of cattle, meat was their main produce, and it was only after the development of refrigeration in warehouses and ships in the 1880s that it was successfully exported to Britain. Until then, an industry called "boiling down" was developed where the carcasses were boiled down to extract the fat which was refined into tallow for making candles. The Blaxland family at Fordwych near Broke had a large facility for this. In 1844 this facility processed 389 cattle and 2439 sheep yielding 50 tons of tallow.

Carl Hoipo Articles of the Colonial Era by historian Carl Hoipo

MEET NEW PEOPLE, LEARN SOMETHING NEW, BRING SOMETHING NEW

JOIN ONE OF OUR MANY LOCAL GROUPS, MAKE NEW FRIENDS, SHARE YOUR SKILLS OR JUST LEND A HAND ... YOUR COMMUNITY WILL BE GRATEFUL

VOLUNTEERS NEEDED NOW

See our back page for all organisations

HSCC
Herald Spires Carpentry & Construction

Carpentry & Construction, Kitchen & Bathrooms, Repairs & Maintenance



Master Builders Association
MEMBER
MASTER BUILDERS, BETTER BUILDERS

Licence # 357776C

dan@hsc.net.au

Dan Shepherd 0419 955 595 Laguna

Wollombi Pilates

Authentic | Gentle | Effective

Mat Class – Wed 9.30am

Chair Pilates – Fri 9.30am

Mat Class – Fri 10.30am

in the Wollombi Community Hall

For more information contact Susan

0403 270 365 or leithsu@bigpond.com

Finding guidance during a difficult time is comforting.



That's why people turn to us.

MB

**MAURER & BRACKS
FUNERAL DIRECTORS**

94 13 13 77

Ken Maurer 49 98 33 80
www.maurerfunerals.com.au
office@maurerfunerals.com.au

Total Pumps & Irrigation

**19 Cessnock Street,
CESSNOCK**

 **02 4990 9444**

The only place in town to buy all your, pumping and irrigation equipment!

We sell

Water tanks	House pumps	Dam aerators
Household filters & Cartridges	solar pumps	Dam pumps
Drip lines for gardens	Pool pumps	PVC pipe & fittings
Poly pipe & fittings	Pool filters & Cartridges	Pool Chemicals
Garden hose & fittings	Brass & gal fittings	Bore pumps
Septic pumps	Ultra violet light filtration systems	
Pond pumps	Silvan spray equipment	Trenching



Don't wait till it's too late!

Come in store for all your fire needs.
We service and sell all brands.



We repair all makes & models of pumps either in store or onsite. Call us for a free quote on all your irrigation needs. We can install or help you with a DIY system.



**MUSGROVE
- REALTY -**

Musgrove Realty is a local family-owned business offering a superior real estate service. Specialising in Hunter Valley Country Properties.

Contact us today for your personalised market appraisal.

Ph: 4998 8383
 Garry: 0429 663 026
 Kurt: 0497 281 475

admin@musgroveready.com.au
www.musgroveready.com.au
 Great Northern Trading Post, Laguna





WOLLOMBI STONEMASONRY & SCULPTURE WORKSHOP



Join your class members in a serene bush setting and learn the art of cutting stone. This course covers stonemasonry, sandstone sculpting, and basic profiling skills, providing hands-on experience and expert guidance to help you master these ancient techniques.

For more info contact Albert Kraan
Your Lead Teacher

0418 280 367
wollombisandstone@bigpond.com
+61 418 280 367

53 Glenloona Road
Laguna NSW 2325, Australia

WOLLOMBI SANDSTONE

ABN 76622475176 Established in 1989

Naturally Sustainable

02 4998 8340 

+61 418 280 367 

By appointment only wollombisandstone@bigpond.com 



WOLLOMBI T-INTERSECTION UPGRADE INFO LINK

Interested about the latest for the upgrade to the Wollombi T-Intersection ?

Go to:

<https://www.cessnock.nsw.gov.au/Works/Current=works/Wollobi-Road-T-Intersection=High-Pedestrian=Activity=Area>

Fully insured
Qualified arborists

Wollombi Valley Tree Services

Contact us for a free site inspection and quote

0411 521 875

Tree removal
Tree pruning
Stump grinding/removal
On-site firewood cutting

WOLLOMBI EARTHWORKS PTY LTD

SCOTT HAMILTON

Dozer Grader
BackHoe Tractor
Bogie Tipper Low Loader

Roads, Dams, House Sites, Clearing,
Mulching, Supply and Construct
Sandstone Retaining Walls and All
General Earthworks

Landline: 49983308
Scott Mobile: 0405378398
Nickie Mobile: 0414722292
Email: wollombiearthworks@bigpond.com



PEATS RIDGE

AGRICULTURE • COMMERCIAL • RURAL • INDUSTRIAL

Australia's Leading Water Solutions Network

- ♦ Water Treatment
- ♦ Pump Systems
- ♦ Fertigation
- ♦ Irrigation Systems
- ♦ Mowers & Ride-Ons
- ♦ Pipes & Fittings
- ♦ Fire Protection Systems
- ♦ Chainsaws & Generators

Ph 4373 1466

780 Peats Ridge Road Peats Ridge

www.thinkwaterpeatsridge.com.au

Council Notifications which may be of interest to the community



Cessnock City Council General Manager resigns

Cessnock City Council General Manager Ken Liddell has resigned after almost three years in the role leaving a legacy of delivery and growth.

Councillors at Wednesday night's Ordinary Meeting accepted Mr Liddell's resignation.

Cessnock City Mayor Daniel Watton paid tribute to Mr Liddell's leadership and expertise.

"Ken has driven a positive and proactive culture at Cessnock City Council, and built our capacity to deliver for the community and better respond to challenges, through his focus on targeted investment," said Cllr Watton.

"I want to sincerely thank Ken for all he brought to the role of general manager, and wish him well for the future."

Council's Director of Planning and Environment Peter Chrystal has been appointed acting General Manager.

Mr Chrystal said Mr Liddell had a strong history of managing large-scale works and infrastructure projects, and improving leadership.

"Ken changed mindsets, altered perspectives and encouraged a growing council to think outside the box, for the betterment of project delivery and our local community," said Mr Chrystal.

"He has left us well placed to manage the challenges we face as a region experiencing rapid growth. Our shared commitment to this great community will ensure a period of continuity, as Council undertakes a recruitment process."

Every week is now greener: Maitland, Cessnock and Singleton councils launch FOGO service

Maitland City Council, Cessnock City Council and Singleton Council have partnered to deliver a coordinated Food Organics and Garden Organics (FOGO) collection service across the region, with weekly green bin collections starting from 30 June 2025.

The new service means households in all three local government areas can now place food scraps, such as vegetable peels, meat and dairy, in their green bins with garden waste for weekly collection and processing into high-quality compost rather than going to landfill.

This initiative meets the NSW Government requirement that all councils implement a weekly FOGO service by 2030 and aligns with each council's broader environmental and sustainability strategies and programs.

"This is more than just a bin service. It's a meaningful shift in how our cities handle waste. We know that our residents care about the environment, and FOGO provides them with a simple and effective way to make a difference every week."

Cessnock Mayor Dan Watton said the service marks a significant milestone in local waste reform.

"FOGO is a game changer. We're proud to be delivering it across Cessnock, Maitland and Singleton and giving our communities a real opportunity to lead the way in reducing landfill and turning waste into something worthwhile," said Mayor Watton.

"FOGO will have significant long-term benefits for our environment, economy and community."

Singleton Mayor Sue Moore highlighted the simplicity of the new system for households.

"Households have received a kitchen caddy and compostable liners make it easier for people to collect food scraps as they go. Empty your caddy, liner and all, into your green bin every few days then put it out for collection weekly from 30 June," said Mayor Moore.

"We're here to support our communities through this transition, and there'll be ongoing education and information to help everyone make the most of FOGO."

A comprehensive education campaign is already underway to support residents with practical tips on what to put in the green bin, how to use caddies and the environmental benefits of composting for the region.

The campaign also ensures residents in each local government area are kept informed about operational details specific to their council.

A local effort all around, the councils are working with Solo Resource Recovery to manage weekly green bin collections and with Australian Native Landscapes (ANL) to process the materials into nutrient-rich compost.

FOGO fast facts

- FOGO means Food Organics and Garden Organics
- FOGO service starts: Monday, 30 June 2025
- Weekly green bin collections for food organics and garden organics
- Kitchen caddy and compostable liners supplied to all households
- Accepted FOGO waste includes: vegetable scraps, meat, bones, dairy, garden clippings
- Food waste diverted from landfill to reduce emissions and create nutrient-rich compost
- Waste collected by Solo Resource Recovery
- Compost processed by Australian Native Landscapes (ANL)

Contact:

Cessnock City Council – Mikaela Booth | 0436 948 454 | mikaela.booth@cessnock.nsw.gov.au



Diary & Events

Church Services

St John's Anglican Church Wollombi is a festival church. There is a service at Christmas and Easter. Baptisms, weddings, funerals and other services are by arrangement. Please contact the Parish on 02-4991 4761 or 0418-269 892 or email: stjohncottage@bigpond.com

Other regular Anglican church events
Suspended during Covid

St Michael's Wollombi, Mass is on the 2nd and 5th Sunday of the month at 2pm

Wollombi Valley Home Church

Meets at Tennis Club
1st Sunday of the month at 2pm, followed by afternoon tea.
Contact Keith 0409-909 971 or Pastor Neville 0467-210 478

Crafty Yarns

10am 3rd Monday monthly. Wollombi Cultural Centre

500 Cards—Wollombi

commence at 6 pm on last Monday in the month.
Wollombi Tennis Clubhouse
Contact: Jan Harrison
janeceharrison08@gmail.com

Chamber of Commerce - Wollombi Valley

General Meetings held every 2nd month. See www.wollombivalleytourism.com.au for venue.

Fire Brigade—Laguna

Training 3rd Saturday of the month with breakfast at 8.30am followed by training from 9am to 11am. Laguna Fire Station. Members meeting 11am after training in March, June, September and December.

Fire Brigade—Wollombi

Training 3rd Saturday monthly 8.30am Wollombi Fire Station. Members meeting 11am following training in even months, All welcome. Enquiries to brigade@wollombibushfire.org.au

Fire Brigade - Bucketty and District

Training 3rd Saturday monthly from 9am - 12pm
Members meeting 1pm on the even months.

Garden Group

1st Monday monthly.
Contact Judy Zieren 0405-281845

Conversations en francais à Wollombi

Rencontres detendues pour ceux qui veulent parler francais a Wollombi. Nous nous reunissons les samedis une fois par mois vers 17 heures chez des particuliers. On discute l'art, l'histoire, la politique, la France – avec un bon vin et fromage bien sur.
Contactez: Gwen Lansbury, glansbury@gmail.com
Ph: 02-4998 3141, 0451 693 376

Landcare Group - Wollombi Valley

Join us to learn more about caring for the land and the wildlife on it. We meet regularly for workshops, planting days and other events. New members are always welcome! Contact us at www.wollombilandcare.org.au or wollombi.landcare@gmail.com

Monthly Historical Ghost Tours

Newcastle Ghost Tours & Jo Potter Ph: 0411-357 519

Museum—Wollombi

6pm summer – 5pm winter, 1st Wednesday monthly except January, Wollombi Cultural Centre

Pony Club—Wollombi Valley

Every 3 weeks contact President Simone 02-4998 8214 for details

Playgroup (all kids 5 and under welcome)

10.30am every Tuesday, at Slacks Park Wollombi

Theology in the Pub discussion group:

4th Sun/month at Wollombi School Residence 2:00.pm

Wollombi Valley Community Association

Community meetings held during the year. Please see OON for advertising of these.

Wollombi Tidy Valleys

11am, every 2nd Thursday Bi-Monthly Wollombi School Meeting Room. All welcome. Contact—Bernice 4991 1688

Wollombi School Community Centre:

Committee meetings held 10am on 2nd Tuesday of each month. Venue is the Principal's Cottage on Cnr of Crawford & Wollombi Roads, Wollombi. Interested persons welcome.

Transport

Grape Experience Tours 0414 457 956

Wine country taxis Cessnock (02) 4990 1111

Sport and Fitness

Pilates Classes

Mat Classes are held Wednesday 9.30am & Fridays 10.30am.
Wollombi Community Hall
Contact: Susan 0403-270 365

Wollombi Tennis

Wednesday from 5:30pm
Sunday 8:00 am
All welcome.
Contact: Julia Brooke 0403-500 381

Eureka Taekwondo

Thursdays 4pm – 5pm
Wollombi Community Hall
Contact: Steve Turner 0400-002 951

YOGA

Wednesday 7:30-8:30pm Vinyasa
Thursday 5.30-6.30pm Yin
Saturday 8.30-9.30am Hatha Flow
Wollombi Community Hall
Contact Helena 0412-369 291

Zumba Classes:

Fitness With Milly Monday Wollombi Hall
7:45am HIIT
9:00am Zumba Gold
Friday Wollombi Tennis Club 8:30am Zumba
Contact: Milly Ph 0414-435 576

Services

Dog and Cat Beds and Accessories 0421 431 451
<http://growls-hisses.com>
houndsfelines@mail.com

Local Accommodation**Bellbird**

Tabitha Hill Cottage 0429 657 166

Laguna

Byora Farm House 02 4998 8227
 Ipakey Cottage 02 4998 3219
 Kawalang Studio –Bucketty/Murrays Run 0404 896 396
 Laguna Cottages 02 4998 3219
 Twin Pines Cottage 0403 083 381
 Valle Laguna 0408 809 471
 Valley Field Escape 0488 436 001

Millfield

Bellbird & Swallows Cottages 0414 786 705
 Neudorf Country Retreat 0414 920 013

Congewai

Brown Muir Cottage 0409 416 416

Wollombi

Applegums 0419 416 416
 Blair Athol Estate 02 4998 3323
 Capers Cottage 0409 305 285
 Cedar Creek Cottages 02 4998 1576
 Corrabare Cottage 0409 416 416
 Cowboys Cabin 0423 109 558
 Cranky Rock Cottage 0438 757 442
 The Farm @ Hunter Escape 0418 114 303
 Grays Inn 02 4998 3483
 Gypsy Willows 02 4998 3404
 Hollybrook Hunter Valley 0411 968 873
 Hunter Valley Escapes 0409 416 416
 Ironbark Cottage 02 4998 3427
 Maggies in Wollombi 0416 039 081
 Mystwood Retreats 02 4998 3234
 Myrtle Cottage Accommodation 0409 416 416
 Pepper Tree Cottage 0416 039 081
 Redleaf Hunter Valley 0412 566 637
 Somewhere Unique 02 4998 3257
 The Studios 02 4998 3182
 Tiny Escape 0426 891 870
 two8seven5 Boutique Stays 0437 977 798
 Undercliff Settlers Cottage 02 4998 3322
 Wild Edge Retreat 02 4998 3304
 Wollombi Barn Stay 02 4998 3221
 Wollombi Birdhouse 0423 376 804
 Wollombi Brook Family Farm Stay 0422 515 905
 Wollombi Bush Retreat 0432 156 396
 Wollombi Farm Country House 0416 039 081
 Wollombi Stays 0416 039 081
 Woodcutters House 0416 039 081
 Yango Creek Farmhouse 0416 039 081

Restaurants, Pubs and Stores

Laguna Village Providore 0478-712613
 Millfield General Store 02 4998 1263
 Myrtle & Stone Cafe 02 4998 3220
 The Trading Post Laguna 02 4998 8244
 Twine Home Store 02 4498 3331
 Wollombi Café—Next Door 0408-599177
 Wollombi General Store 02 4998 3230
 Wollombi Tavern 02 4998 3261

A NOTE FROM THE OON TEAM

Our Own News is a Wollombi Valley Community Association (WVCA) initiative co-ordinated by volunteers.

Articles or advertisements must be emailed as a **word file** with photos attached as a separate **jpeg** file to **oon_news@hotmail.com** no later than the *15th day of each month* for publication in the following month's edition.

Articles are not edited but printed as received unless otherwise agreed and there is no guarantee of publication. Articles must be no longer than 200 words.

WVPA and the OON Team accept no liability for statements made or opinions expressed and are not responsible for the veracity of articles or advertising material.

Opinions expressed in OON are not those of WVCA or the OON Team, although they have the final word on content. If you are mentioning someone in an article please check details and facts with them and obtain their permission prior to submitting any articles for print.

All rights reserved: no part of artwork/photography for this publication in whole or in part may be reproduced without the permission of the OON Team. We welcome your comments by email. We hope you enjoy reading your copy of OON and thank you for supporting our community.

The OON Team